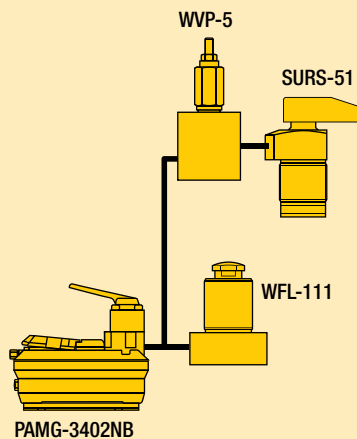


Shown: PAMG-5402NB, PACG-3102NB, PATG-3102NB, PATG-5105NB



Turbo II air hydraulic pumps generate the hydraulic pressure you need using the air pressure you have available. The Air Saver Piston reduces air consumption and operating costs.

They are ideal for providing the power and speed desired in simple clamping circuits. Turbo II air-hydraulic pumps are best suited to medium and lower cycle applications. At only 75 dBA, the Turbo II series helps to keep noise level to a minimum.



Quick and powerful hydraulic supply in an economical air-powered unit

- On-demand stall-restart operation maintains system pressure, providing clamping security
- External adjustable pressure relief valve (behind sight glass)
- Internal pressure relief valve provides overload protection
- Reduced noise level to 75 dBA
- Operating air pressure: 50-125 psi – enables pump to start at low air pressure**
- Reinforced heavy-duty lightweight reservoir for applications in tough environments
- Five valve mounting options provide flexibility in setup and operation
- Fully serviceable air motor assembly

Select the required output

3000 series

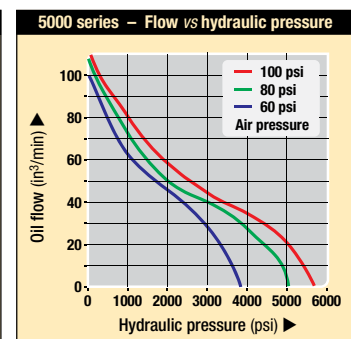
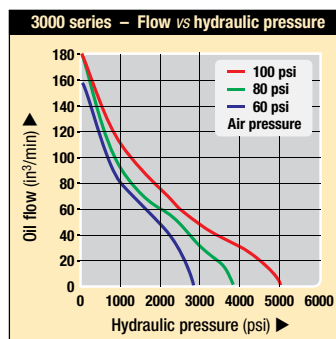
- Hydraulic to air ratio: 45:1

5000 series

- Hydraulic to air ratio: 60:1

** NOTE: From 50-125 psi air inlet pressure. Performance is significantly diminished below 50 psi. Performance may vary compared to listed values due to seal friction, internal pressure drops and manufacturing tolerances. Be sure to allow some flexibility on air inlet pressure.

Output oil flow vs pressure

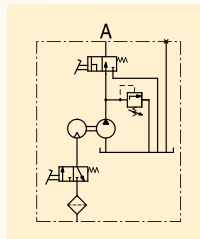


Collet-Lok® product line
 Swing clamps
 Work supports
 Linear clamps
 Power sources

 **Select the required output:**

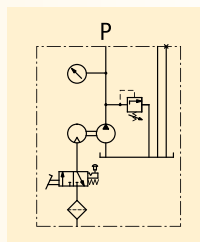
PATG series

- Momentary air inlet treadle for operation of single-acting cylinders
- Provides advance, hold and retract functions



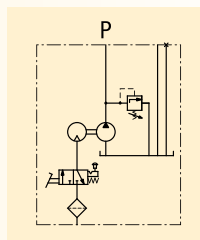
PACG series

- Momentary or continuous air inlet treadle
- A remote valve is required for operation of cylinders



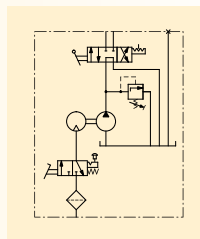
PASG series

- Momentary or continuous air inlet treadle
- Suitable for mounting any single- or double-acting valve with a DO3 mounting configuration
- Available with multiple valve manifold (2-gallon only)



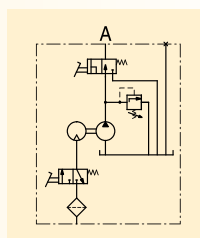
PAMG series

- Momentary or continuous air inlet treadle
- Manual 4-way, 3-position, tandem center valve for single- or double-acting operation



PARG series

- Includes 15 ft. air pendant for remote control of single-acting cylinders
- Provides advance, hold and retract functions



Oil Flow: 180 in³/min

Pressure: 5000 psi max

Sound level: 75 dBA

Air: 12 scfm

Reservoir: 70-462 in³

- E** Bombas hidroneumáticas
- F** Pompes hydro-pneumatiques
- D** Lufthydraulische pumpen


 **Options**

Gauges and accessories

 190 ▶



Regulator-filter-lubricator

 106,158 ▶



 **Important**

For high cycle applications electric pumps are recommended.



Shown: PACG30S8S-WM10

Collet-Lok® product line
Swing clamps
Work supports
Linear clamps
Power sources



2 Gallon Turbo Pump

The 2 gallon Turbo pump models feature a drawn steel reservoir with an oil level sight glass. Choose from models with a P & T manifold for use with remote mount valves, a single station D03 manifold, the standard treadle or manual 4 way valve models. The PARG series uses an air operated pendant to control the pump functions. Or build a system pump with multiple Enerpac VP valve series, VP03 series or VSS/VST series D03 mount valves. The VMMD series D03 Manual valves can also be used.

All dimensions in inches.

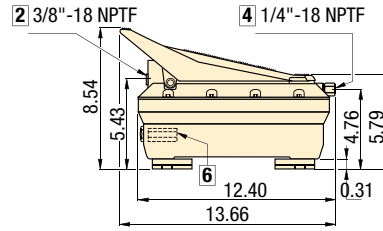
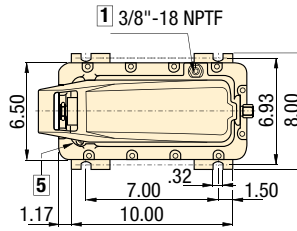
- 1 Auxiliary vent/tank fill port
- 2 Hydraulic output
- 3 Gauge mounting port
- 4 Swivel air input with filter
- 5 Filtered permanent tank vent
- 6 Adjustable pressure relief valve
- 7 Air pendant air input

Product selection

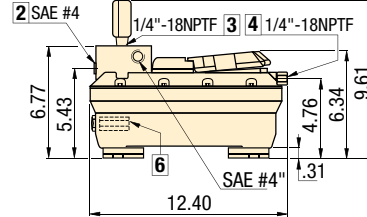
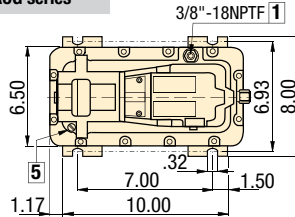
Description	Model numbers 3000 series	Model numbers 5000 series	Usable oil capacity ²⁾		Air pressure range	Air consumption	
			horizontal mount	vertical mount			
	180 in ³ min ¹⁾	120 in ³ min ¹⁾	in ³	in ³	psi	scfm	lbs
▼ Factory supplied valves							
Hand/foot 3-way	PATG-3102NB	PATG-5102NB	127	70	50-125	12	19
Hand 4-way	PAMG-3402NB	PAMG-5402NB	127	70	50-125	12	25
Remote 3-way pendant	PARG-3102NB	PARG-5102NB	127	70	50-125	12	23
▼ User supplied valves							
Remote mount	PACG-3002SB	PACG-5002SB	127	70	50-125	12	19
Pump mount, single DO3 Valve	PASG-3002SB	PASG-5002SB	127	70	50-125	12	19

1/2 Gallon reservoir

PATG series

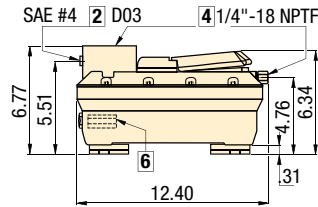
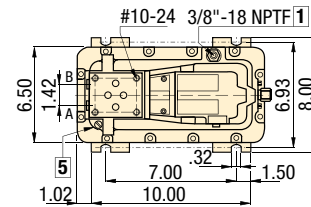


PACG series

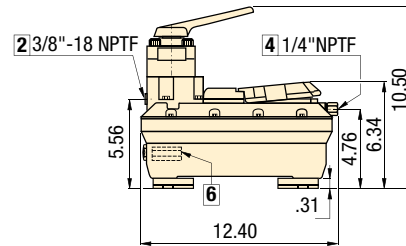
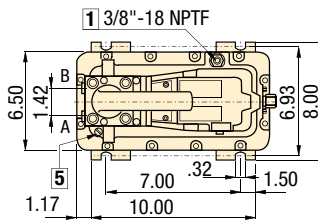


PACG series include pressure gauge G-2517L.

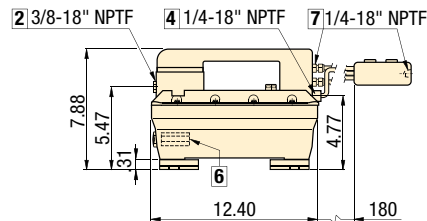
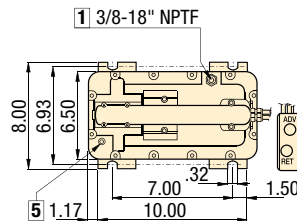
PASG series



PAMG series



PARG series

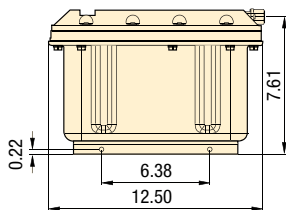


¹⁾ At 0 psi hydraulic and 100 psi air pressure.

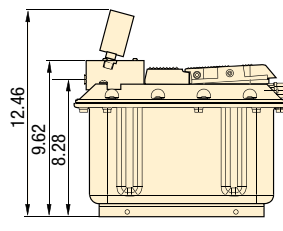
²⁾ Turbo air-hydraulic pumps are also available with 305 in³ reservoir. To order replace 2 in model number with 5.

 **2-Gallon reservoir**

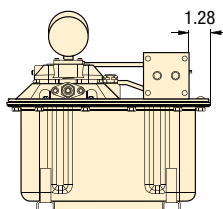
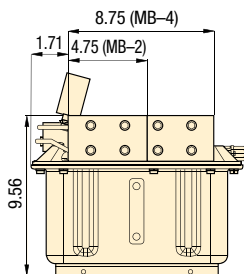
All models



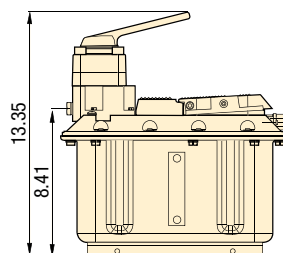
PACG series



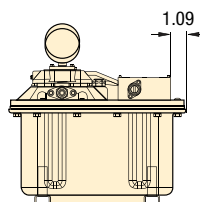
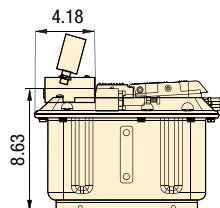
PACG with MB2 or MB4



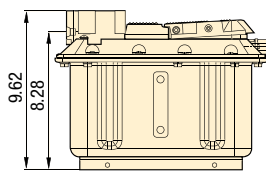
PAMG series



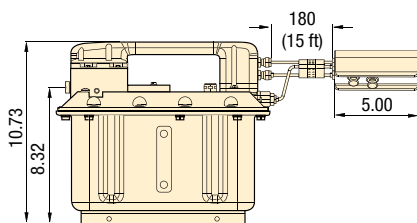
PACG with WM10



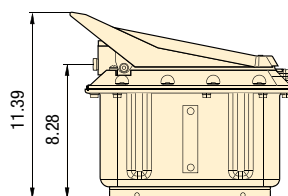
PASG series



PARG series



PATG series



Oil Flow: 180 in³/min

Pressure: 5000 psi max

Sound level: 75 dBA

Air: 12 scfm

Reservoir: 70-462 in³

- E** Bombas hidroneumáticas
- F** Pompes hydro-pneumatiques
- D** Lufthydraulische pumpen

 **Options**

Gauges and accessories

190 ▶




Regulator-filter-lubricator

106,158 ▶



 **Product selection**

Description	Model numbers 3000 series	Model numbers 5000 series	Usable oil capacity	Air pressure range	Air consumption	
	180 in ³ min ¹⁾	120 in ³ min ¹⁾	in ³	psi	scfm	lbs
▼ Factory supplied valves						
Hand/foot 3-way	PATG-31S8N	PATG-51S8N	462	50-125	12	54
Hand 4-way	PAMG-34S8N	PAMG-54S8N	462	50-125	12	60
Remote 3-way pendant	PARG-31S8N	PARG-51S8N	462	50-125	12	58
▼ User supplied valves						
Remote mount	PACG-30S8S	PACG-50S8S	462	50-125	12	54
Pump mount, Single DO3 Valve	PASG-30S8S	PASG-50S8S	462	50-125	12	54
Pump mount, Two DO3 Valves	PACG-30S8S-MB2	PACG-50S8S-MB2	462	50-125	12	58
Pump mount, Four DO3 Valves	PACG-30S8S-MB4	PACG-50S8S-MB4	462	50-125	12	61
Pump mount, (1-8) VP Valves	PACG-30S8S-WM10	PACG-50S8S-WM10	462	50-125	12	56

¹⁾ At 0 psi hydraulic and 100 psi air pressure.